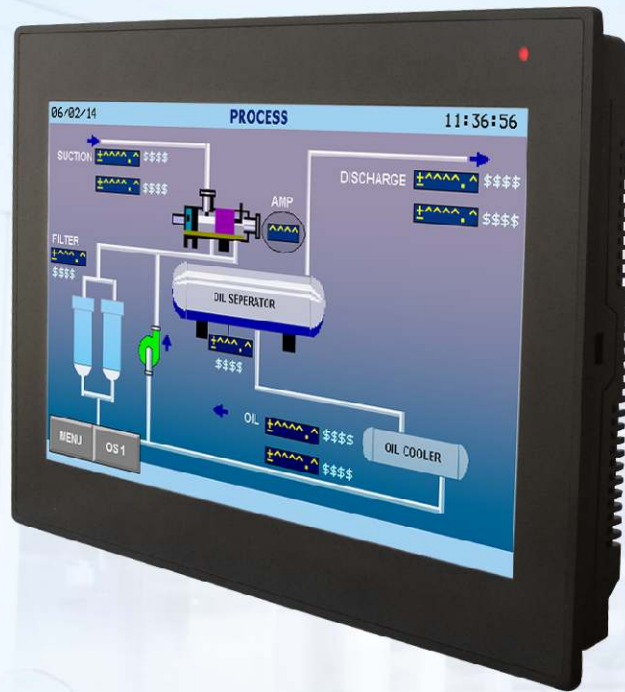




FlexiPanels® - FP3102

- ✓ NEW HIGH PERFORMANCE 10.2" HMI FROM RENU ELECTRONICS
- ✓ ATTRACTIVE SLIM HOUSING
- ✓ SUITABLE FOR VARIETY OF APPLICATIONS
- ✓ LARGE MEMORY FOR SCREENS AND GRAPHICS
- ✓ REAL VALUE FOR YOUR MONEY



Salient Features

- ✓ 10.2" TFT Color display with touch screen
- ✓ Two serial communication ports
- ✓ One USB programming port
- ✓ One USB Host port
- ✓ One Ethernet port
- ✓ One SD card slot
- ✓ Supports Horizontal and Vertical display orientation
- ✓ High quality color display
- ✓ Front Panel mounting with IP66 rating
- ✓ Multilanguage support with true type Windows fonts
- ✓ CE, UL Class I Div 2, RoHS

Models		FP3102T	FP3102TN
Display		10.2" WVGA Color TFT	10.2" WVGA Color TFT
Brightness		350 cd/m²	350 cd/m²
Resolution		800x480 Pixels	800x480 Pixels
Backlight		LED Backlight	LED Backlight
CPU		32-bit RISC processor	32-bit RISC processor
Memory		Up to 128MB	Up to 128MB
Screen Memory		Up to 45MB	Up to 45MB
Historical Alarms		2700 Alarms	2700 Alarms
Retentive Memory		22000 Words (EEPROM)	22000 Words (EEPROM)
Data Log		Up to 20 MB	Up to 20 MB
Serial Comm-unication	Number of ports	2	2
	Com1	RS232 / RS485	RS232 / RS485
	Com2	RS232 / RS485	RS232 / RS485
USB Interfaces	USB Device	1 USB Device Type B micro port for programming	1 USB Device Type B micro port for programming
	USB Host	1 USB Host port	1 USB Host port
SD Card Slot	Type	NA	microSD HC
	Capacity	NA	High Capacity (4GB to 32GB)
	Speed Class	NA	
	UHS Speed Class	NA	
Ethernet Interface		NA	One 10/100 Mbps
RTC		Yes	Yes
Power Supply		24VDC (±15%)	24VDC (±15%)
Power Rating		7W	7W
Operating Temperature		0 to 60° C ^{##}	0 to 60° C ^{##}
Storage Temperature		-20 to 85° C	-20 to 85° C
Humidity		10 to 95% non condensing	10 to 95% non condensing
Approvals		CE, UL Class I Div 2	CE, UL Class I Div 2
Mounting		Front Panel Mounting, IP66 rated	Front Panel Mounting, IP66 rated
Weight (Approximate)		900 gms.	900 gms.
Bezel Dimensions (mm)		268W x190H x 33D (Drawing E)	268W x190H x 33D (Drawing F)
Panel Cutout (mm)		256W x 178H	256W x 178H

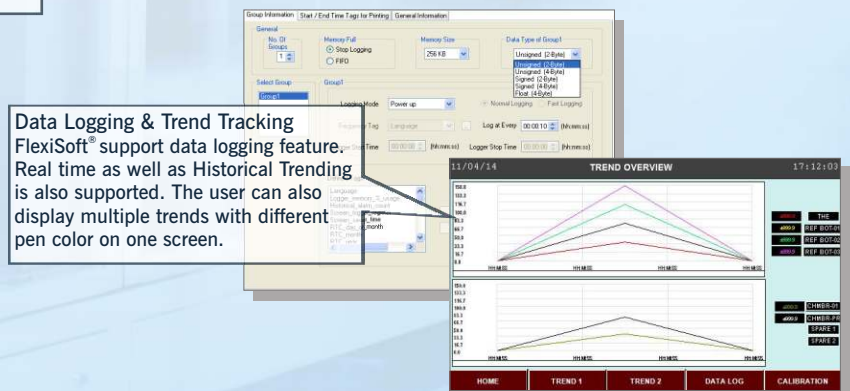
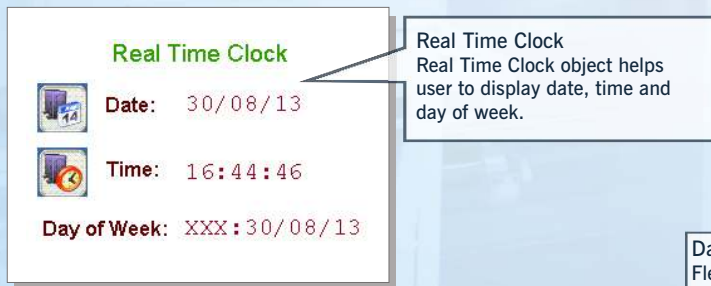
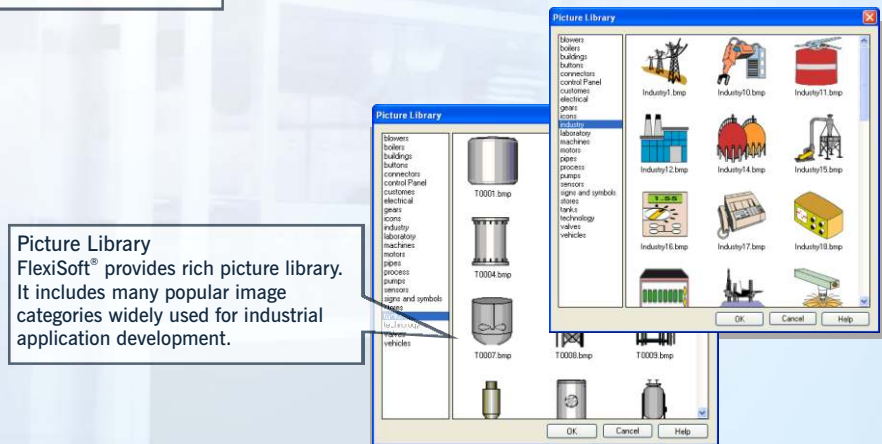
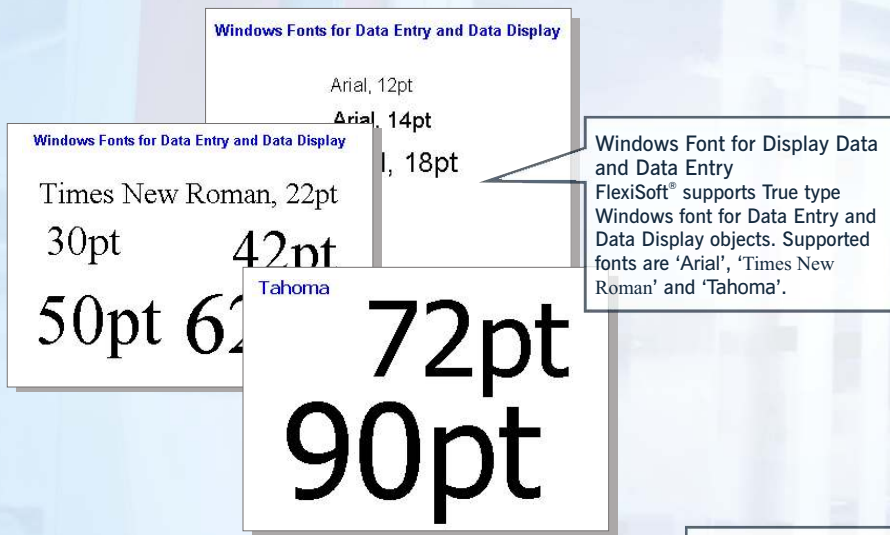
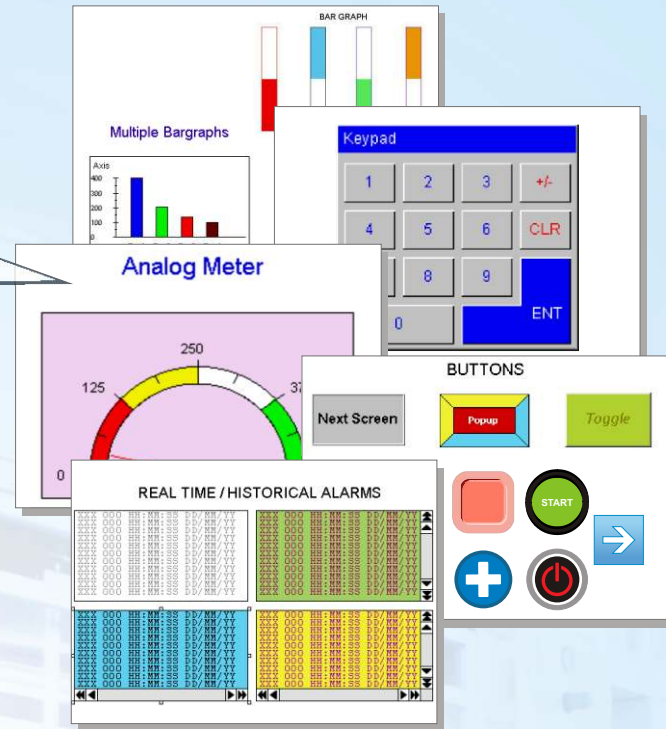
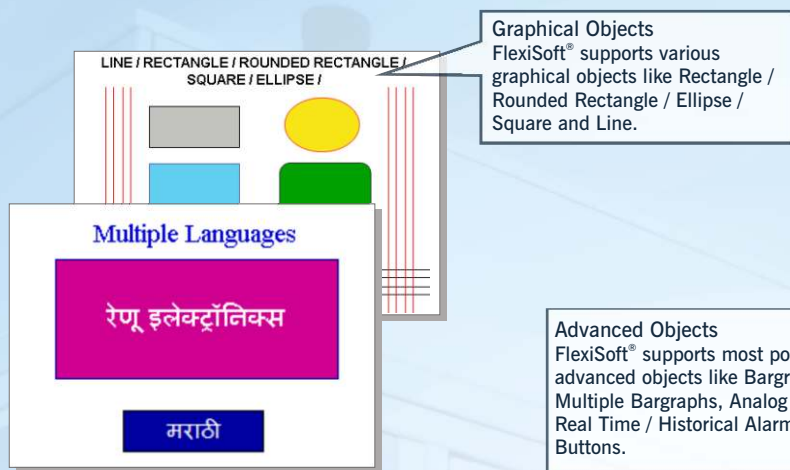
##For UL, operating temperature range is 0 to 50°C

Serial Driver	FP3102
ABB PLCs	✓
Allen Bradley DF1	✓
Panasonic FP Series	✓
Baldor	✓
Danfoss Drive	✓
Delta PLCs	✓
Fatek PLCs	✓
Renu FlexiLogics [*]	✓
FlexiLogics Slave Driver [*]	✓
G9SP Safety Controller	✓
GE SNP	✓
GE SNP-X	✓
Idec PLCs	✓
LG Master K Series PLC	✓
LG Master-K 300S	✓
Mitsubishi FX	✓
Mitsubishi Q series PLCs (Serial)	✓
Modbus ASCII (Unit as Master)	✓
Modbus RTU (Unit as Master)	✓
Modbus RTU (Unit as Slave)	✓
Omron Host Link	✓
Omron Inverter Memobus	✓
Siemens Micromaster Driver (USS)	✓
Siemens Step-7 Micro	✓
Toshiba (Link Port) Series PLCs	✓
Toshiba Inverters PLC	✓
Toshiba T Series	✓
TriPLC	✓
Twido PLCs	✓
Unitelway PLCs	✓
Universal Serial Driver (ASCII)	✓

Ethernet Driver	FP3102
AB PLC EIP PCCC (Ethernet IP)	✓
FlexiLogics [*]	✓
FlexiLogics Slave Driver [*]	✓
Logix 5000 PLCs	✓
Modbus/TCP Master (Client)	✓
Modbus/TCP Server (Slave)	✓
Universal Ethernet Driver (ASCII)	✓

^{*}Supported with native programming environment.

HMI Software Features



Supported Objects

Supported Tasks

Supported Printers

Drawing Tools

- Line, Rectangle, Ellipse
- Rounded Rectangle
- Text, Multilingual text
- Picture

Data Entry / Data Display

- Numeric data
- Bit data

Clock objects

- Time
- Date

Advance Objects

- Buttons
- Lamps
- Bargraph
- Multiple Bargraph
- Analog Meter
- Alarm
- Numeric Keypad
- ASCII Keypad
- Custom Keypad

Supported tasks

- Button specific tasks
- Global tasks
- Screen specific tasks
- Data exchange tasks

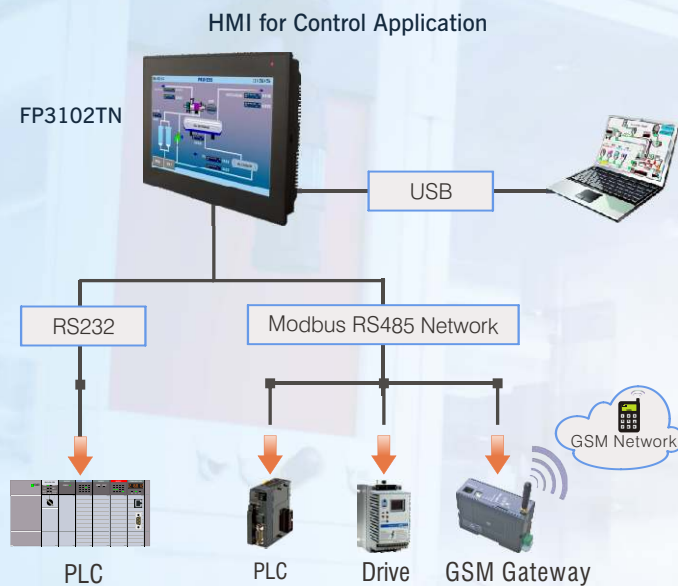
FlexiPanels® support following Dot

Matrix serial printers:

- EPSON
- SAMSUNG
- TVS



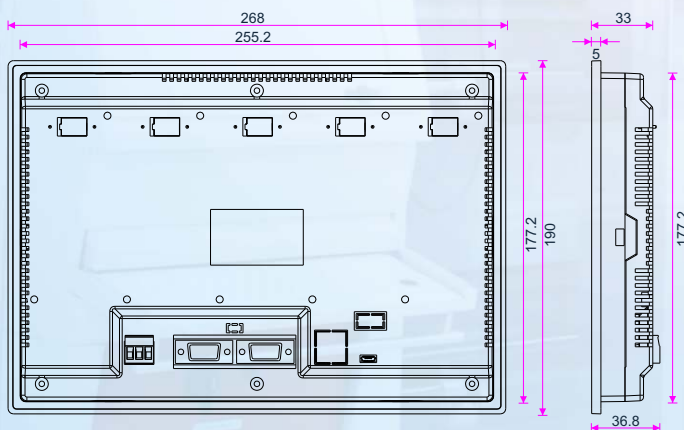
Application Example



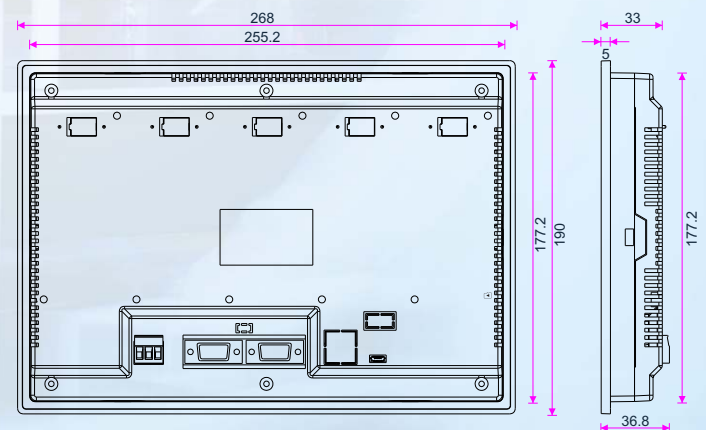
Ordering Information

Models	Description
FP3102T	10.2" TFT, 24VDC, 2 Serial ports (RS232/RS485), 1 USB device, 1 USB host
FP3102TN	10.2" TFT, 24VDC, 2 Serial ports (RS232/RS485), 1 USB device, 1 USB host, 1 Ethernet, 1 SD Card Slot
Programming SW	FlexiSoft® v2.3 and later (Free)

Dimensions



Drawing E



Drawing F

All dimensions are in mm.
Please contact factory for more information. We welcome an opportunity to develop new, custom drivers and customized units.



HEAD OFFICE

Survey No. 2/6, Baner Road, Pune - 411045, India.
Tel : +91 20 2729 2840 - 46 Fax : +91 20 2729 2839
Email : info@renuelectronics.com
Website: www.renuelectronics.com

An ISO 9001:2008 and ISO 14001:2004 certified company